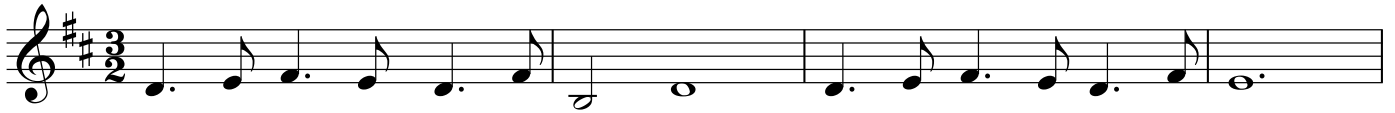


GENTLE SHEPHERD (PSALM 23)



1. Gen - tle Shep - herd, walk be - side me, for with you I shall not want.
2. Gen - tle Shep - herd, come re - store me; let me walk in right - eous paths.
3. Gen - tle Shep - herd, now sus - tain me, at the ta - ble you pre - pare.



With your pres - ence cheer and guide me; a - long the path for - sake me not.
For your name lead on be - fore me, and guide me in your sove - reign plans.
In the sight of those who hate me, your bles - sings flow be - yond com - pare.



By the wat - ers gent - ly lead me; In the pas - tures let me lie,
Through the val - ley, Lord, be near me, then no e - vil shall I fear.
Sure - ly Love shall e'er pur - sue me, though I wan - der far a - way.



for in faith - ful - ness you feed me, and by your grace my needs sup - ply.
In your mer - cy stoop to hear me, when in the dark I lift my pray'r.
In your house, O Lord, re - new me, where I shall dwell for all my days.